

## NANAO

### Technical Specifications

**Composition:** 60% POLYESTER, 40% COTTON

**Width:** 140 cm. UNE 400335

**Weight m2:** 545,03 gr/m2

**Tear strength:** Warp: 2065,00 - Weft: 607,00 UNE EN ISO 13934-1 (N)

**Tear displacement:** Warp: 4,3 - Weft: 4,6 UNE PR EN ISO 13936-2 (mm)

**Abrasion resistance:** > 50.000 cycles UNE EN ISO 12947

**Pilling resistance:** 5 no pilling (ISO DIS 12945-2)



NANA-AC 01



NANA-AC 02



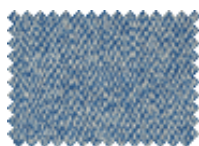
NANA-AC 112



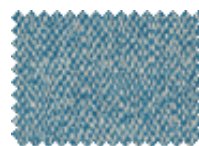
NANA-AC 13



NANA-AC 28



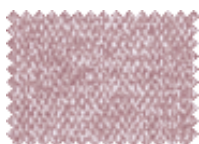
NANA-AC 29



NANA-AC 321



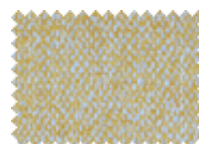
NANA-AC 323



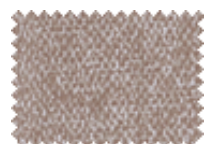
NANA-AC 324



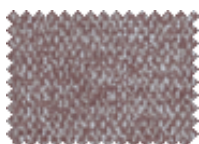
NANA-AC 42



NANA-AC 514



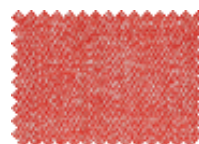
NANA-AC 515



NANA-AC 516



NANA-AC 52



NANA-AC 55

## Water cleaning in three simple steps



1. Remove any excess residue on the upholstery.
2. Apply water over the stain, either directly or using a damp cloth. Wait a few seconds.
3. Press down over the stain with the damp cloth and rub gently over the fabric using circular movements. If the stain does not come off completely, repeat the process as required.

## Now, you can clean stains **with just water**

Aquaclean Technology® enables you to get rid of small stains such as wine, coffee, food and even most marker pens without having to wash with soap or detergent.

### Maintenance and cleaning

#### · LIQUIDS OR OILS

Absorb the excess liquid or oil with a cloth or paper towel, then rub gently with circular movements.

#### · GREASE, PEN INK

Apply water over the stain, either directly or using a damp cloth, leave on the fabric for a few seconds, then rub the stain gently with circular movements. Repeat the process as many times as necessary. Always leave the fabric to dry.

#### · DUST

Remove the dust with a vacuum cleaner.



### Washing

#### WASHING INSTRUCTIONS

For normal care, you don't need to remove and wash the sofa fabric. But for large or tough stains, before washing review the following instructions:

- Machine wash, delicate cycle (maximum 30°C).
- Use neutral detergents.
- Do not spin dry.
- No bleach.
- Do not dry in tumbler.
- Do not dry in sunlight.
- Do not squeeze or wring.
- Iron inside out.
- Use soft brush.
- Can be dry cleaned.